

State of California The Resources Agency
Department of Parks and Recreation
PRIMARY RECORD

Primary # _____
HRI # _____
Trinomial _____
NRHP Status Code _____
Other Listings _____
Review Code _____ Reviewer _____ Date _____

Page 1 of 3 *Resource name(s) or number (assigned by recorder) 481-483 Jessie Street

P1. Other Identifier 986 Mission Street

*P2. Location: ☐ Not for Publication ☒ Unrestricted

*a. County: San Francisco

and P2b and P2c or P2d. Attach a Location Map as necessary.

*b. USGS 7.5' Quad:

Date:

*c. Address: 481-483 Jessie St

City: San Francisco

Zip:

d. UTM: (Give more than one of large and/or linear resources) Zone _____; _____mE/ _____mN

e. Other Locational Data: Assessor's Parcel Number: 3704024

*P3a. Description: (Describe resource and its major elements. Include design, materials, condition, alterations, size, setting, and boundaries)

481-483 Jessie Street is a five-story with mezzanine, rectangular-plan, reinforced concrete, Edwardian style commercial building that is clad with stucco and topped by a flat roof. The building occupies the entirety of its 8,000 square foot lot on the southeast side of Jessie Street between Mint and 6th streets. The primary facade faces southeast onto Mission Street and is divided into two structural bays. The left bay of the first story features a storefront with a recessed entrance on the left side. The entrance features two fully-glazed, aluminum-frame pedestrian doors with a sidelight and transom. On the right is a large display window above a ceramic tile dado. The right bay is deeply recessed and enclosed by a metal security gate. It appears to contain at least one sliding, aluminum-sash window and a pedestrian door. The mezzanine level features large, single-lite, fixed windows irregularly interspersed with one-over-one, double-hung, wood-sash windows. The second through fifth stories feature banks of five, aluminum-sash windows in each bay. The windows consist of a double-hung sash over a fixed sash and are separated by wide mullions. Flat wall panels adorn the wall surfaces between each story level and the facade is framed by a projecting band of stucco trim. A steel fire escape is mounted at the center of the facade and spans the second through the fifth stories, with a ladder accessing the roof. The facade terminates in a parapet adorned with molded and modillioned cornice and a roundel with a lion's head at the center.(continued)

*P3b. Resource Attributes: (list attributes and codes) HP7. 3+ story commercial building

P4. Resources Present: ☒ Building ☐ Structure ☐ Object ☐ Site ☐ District ☐ Element of District ☐ Other

P5a. Photograph or Drawing (Photograph required for buildings, structures, and objects)

*P5b. Photo (view, date, accession #

View of southeast facade.
103_4084.JPG 3/8/2011

*P6. Date Constructed/Age and Sources

☐ Historic ☐ Prehistoric ☐ Both

1907, Assessor's Office

*P7. Owner and Address:

Ngon Mai Low Revoc Trust
2227 29th Ave
San Francisco Ca 94116

*P8. Recorded by

Tim Kelley Consulting
2912 Diamond St. #330
San Francisco, CA 94131

*P9. Date Recorded:

3/8/2011

*P10. Survey Type: (Describe)

Intensive

*P11. Report Citation: (Cite survey report and other sources, or enter "none")

*Attachments

☐ Archaeological Record
☐ Artifact Record

☐ BSOR

☐ NONE

☐ District Record

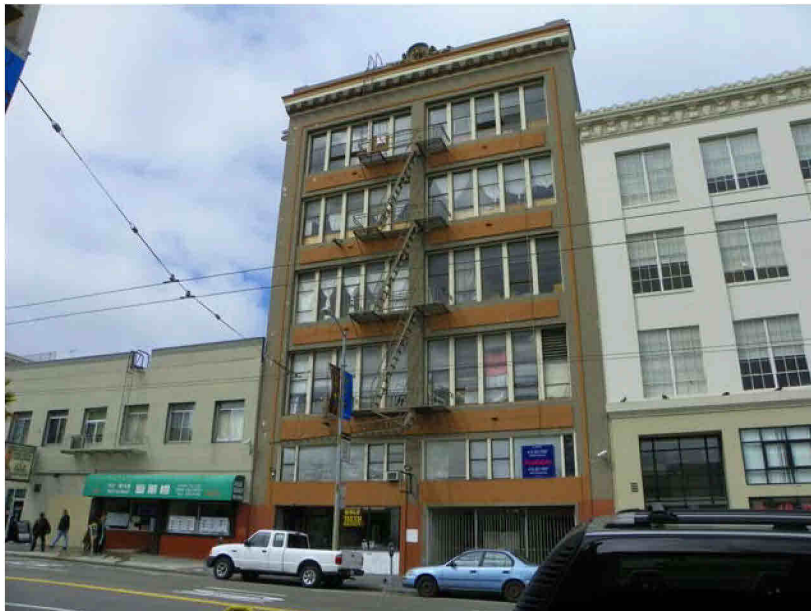
☒ Photograph Record

☐ Location Map

☐ Linear Feature Record

☐ Sketch Map

☒ Continuation Sheet ☐ Other...



CONTINUATION SHEET

Primary #
HRI #
Trinomial

Page 2 of 3

Resource Name or # (Assigned by Recorder) 481-483 Jessie Street

*Recorded by: Tim Kelley Consulting

Date 3/8/2011

☒ Continuation ☐ Update

P3a: Description (continued)

The rear facade faces northwest onto Jessie Street and is clad with stucco. The first story features two vehicular entrances with metal roll-up doors at the center and a pedestrian entrance covered by a metal security gate and surmounted by a sliding, vinyl-sash window with false muntins on the left. The upper stories are divided into two bays. The second story features banks of multi-lite windows in each bay that have fixed and operable portions and are separated by wide mullions.

The third through fifth stories feature banks of windows that consist of double-hung sashes over fixed sashes, also separated by wide mullions. On the left side of each story is an individual two-over-two, double-hung window. The facade terminates in a flat roofline adorned with a simple cornice. The upper portion of the southeast facade is visible, but is featureless. The northeast facade abuts a neighboring building and is not visible. The building appears to be in good condition.

Page of 3 Resource Name or # (Assigned by Recorder) 481-483 Jessie Street

*Recorded by: Tim Kelley Consulting Date 3/8/2011

☒ Continuation ☐ Update

Note: 1997 Photos no longer available, all photos by Tim Kelley Consulting



View of northwest facade. 103_4086.JPG
3/8/2011